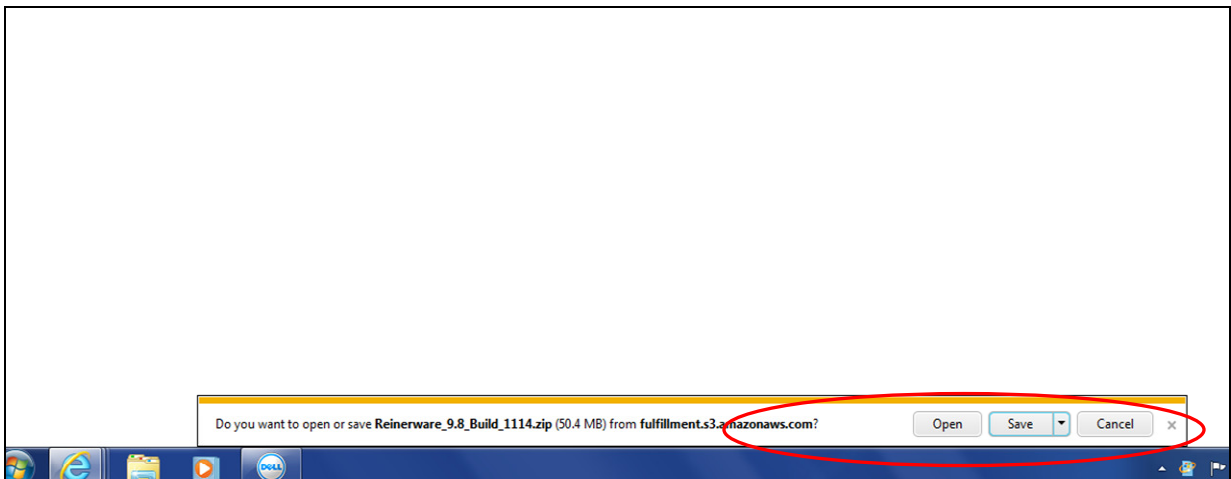


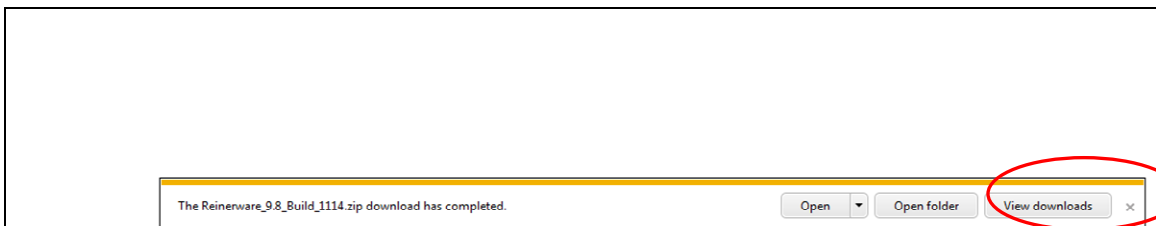
Installing Reinerware from the web.

Once you have requested your free trial from the website, you will receive an email with a link to allow you to download the free trial. Double click on that link and the download will initiate.

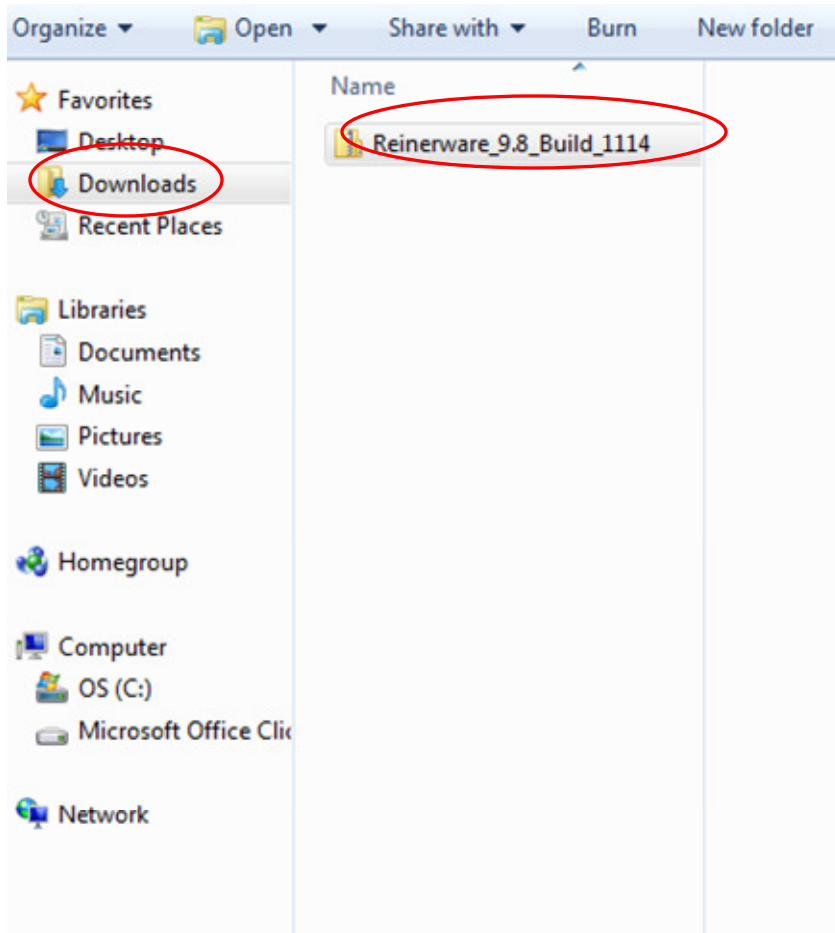
1. Accept that you want to download the file by clicking “save”.



2. Either open file or go to “view downloads”

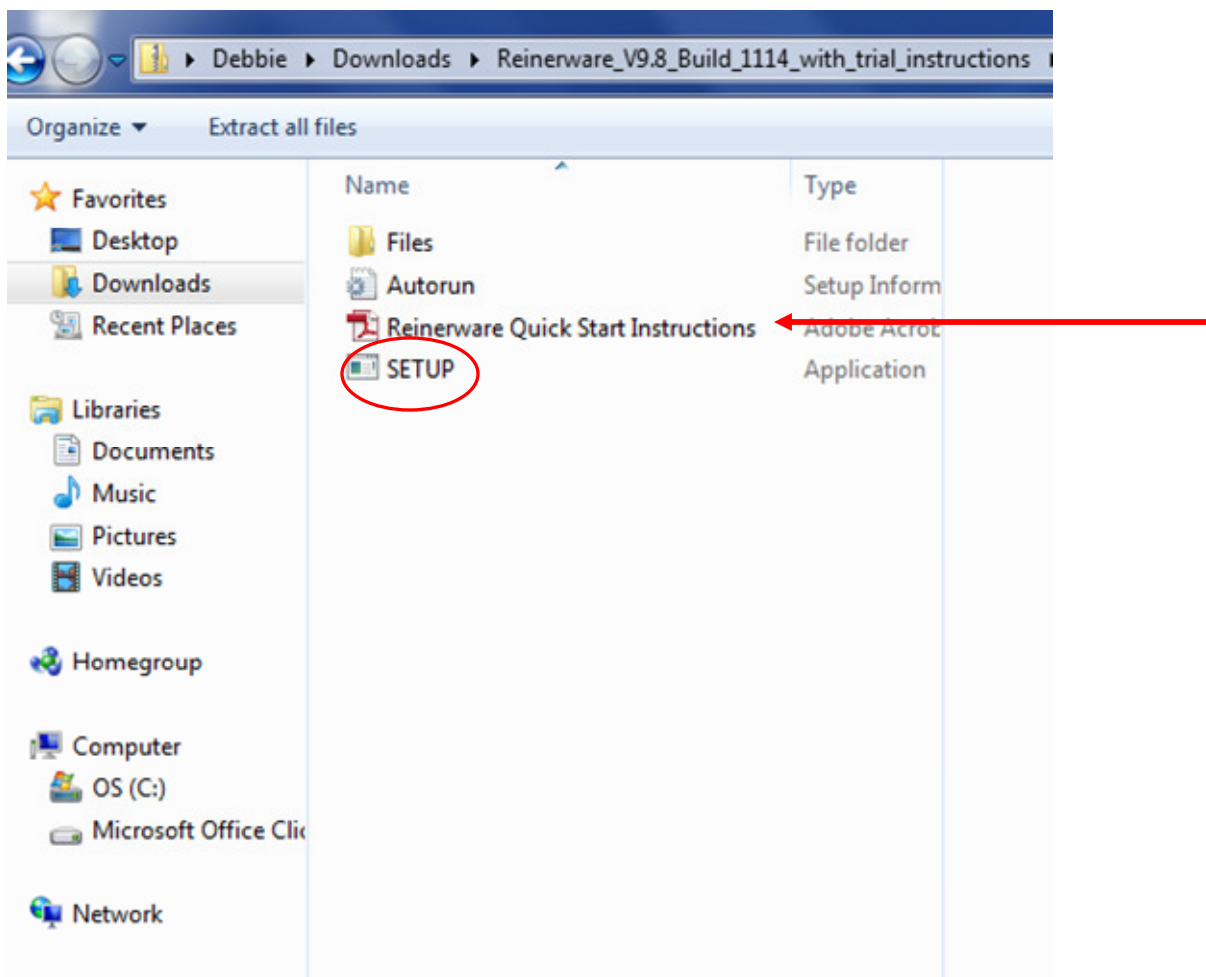


If you click past the open file button accidentally, you can always right click on your windows icon in the lower left hand corner of your screen, Choose Open Windows Explorer and you will be brought to this screen. Right click on Downloads, Double right click on Reinerware 9.8 build 1114.



First open up the file named “Reinerware Quick Start Instructions” and print it out so you will have basic instructions as to how to walk through the trial. Note- If you choose to purchase Reinerware, you will receive a full instruction manual(70 pages plus) with your purchase.

Now double right click on “Setup”



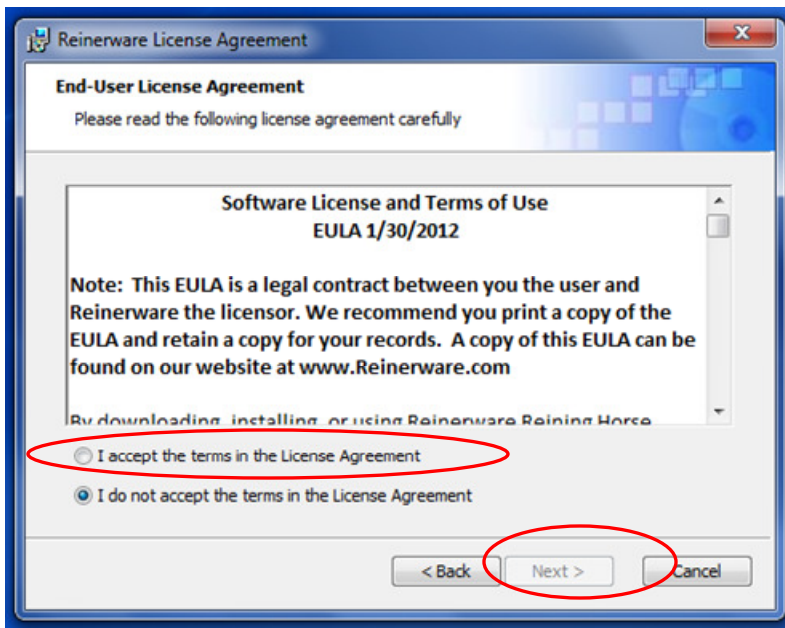
You may get a pop up window that asks “do you want to allow the following program to make changes to this computer? Answer “yes”

3. The setup wizard will walk you through

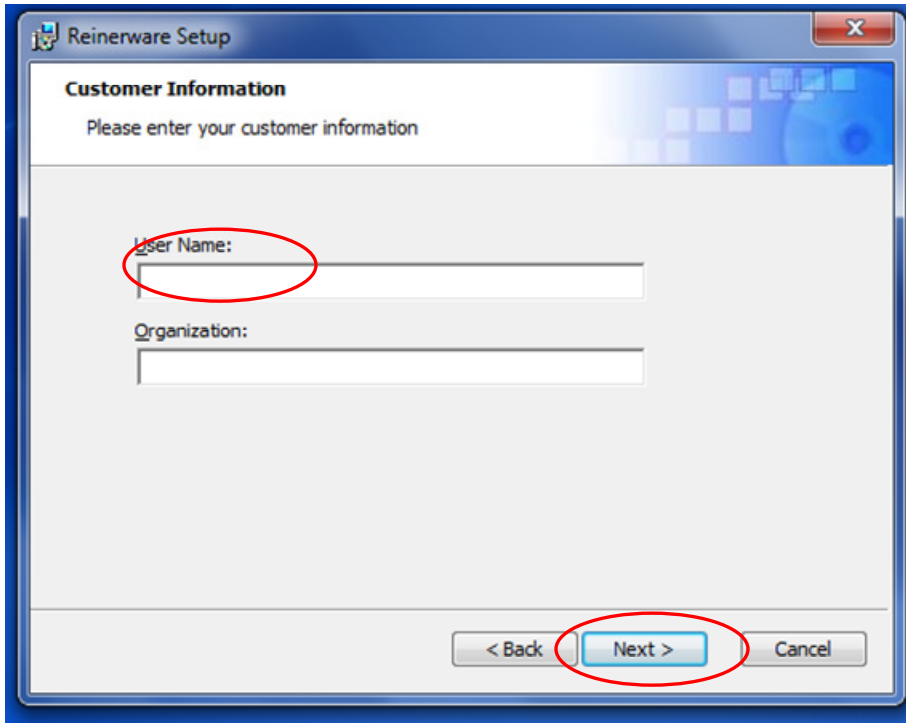
Choose Next



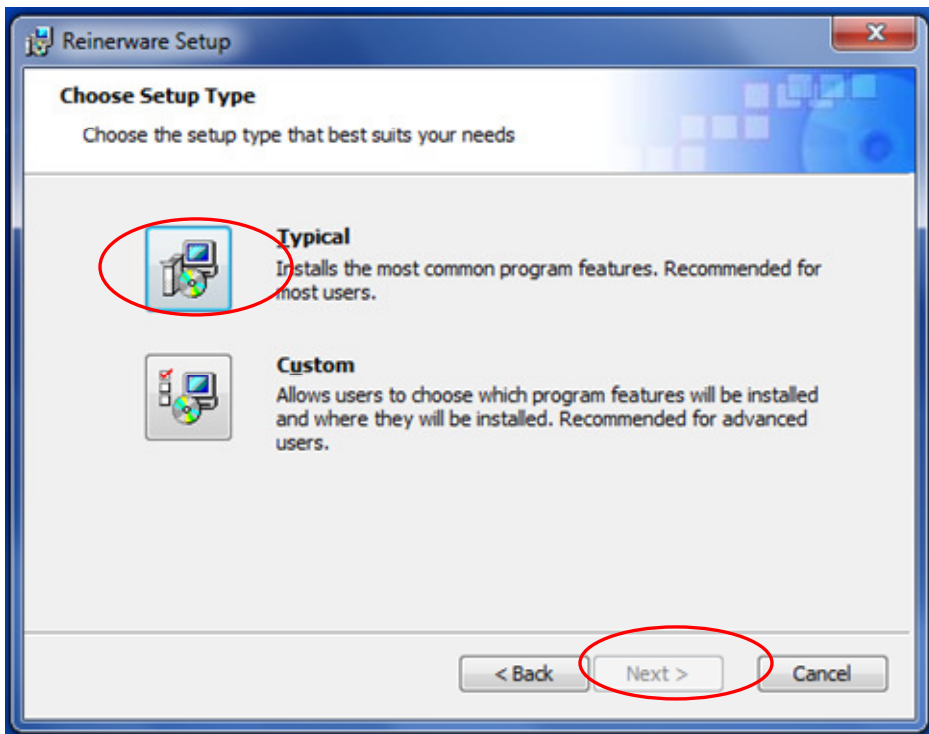
Click I accept, then next



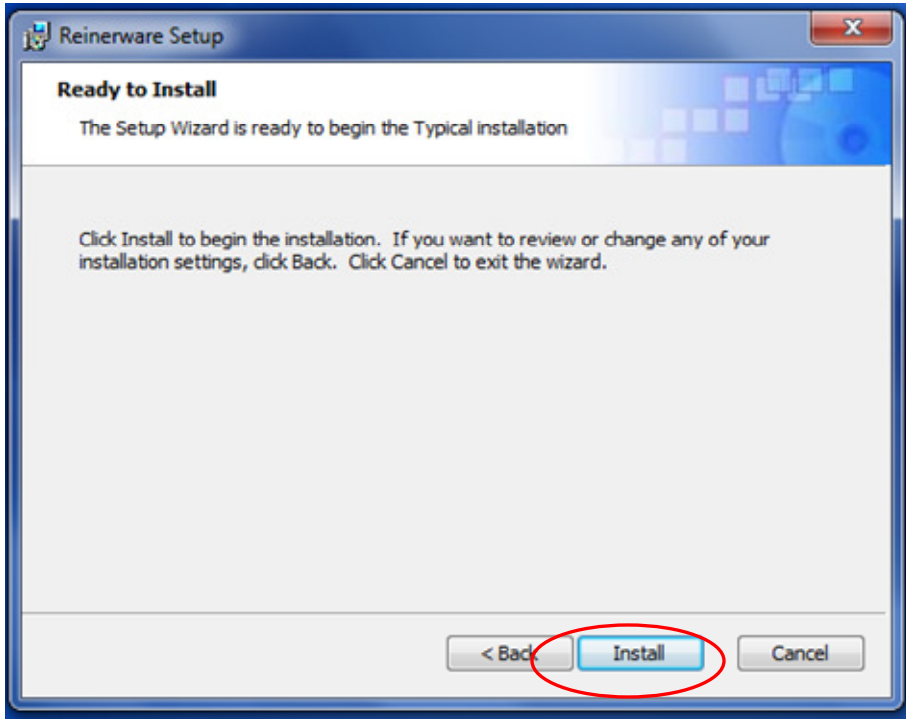
Input your user name, click next



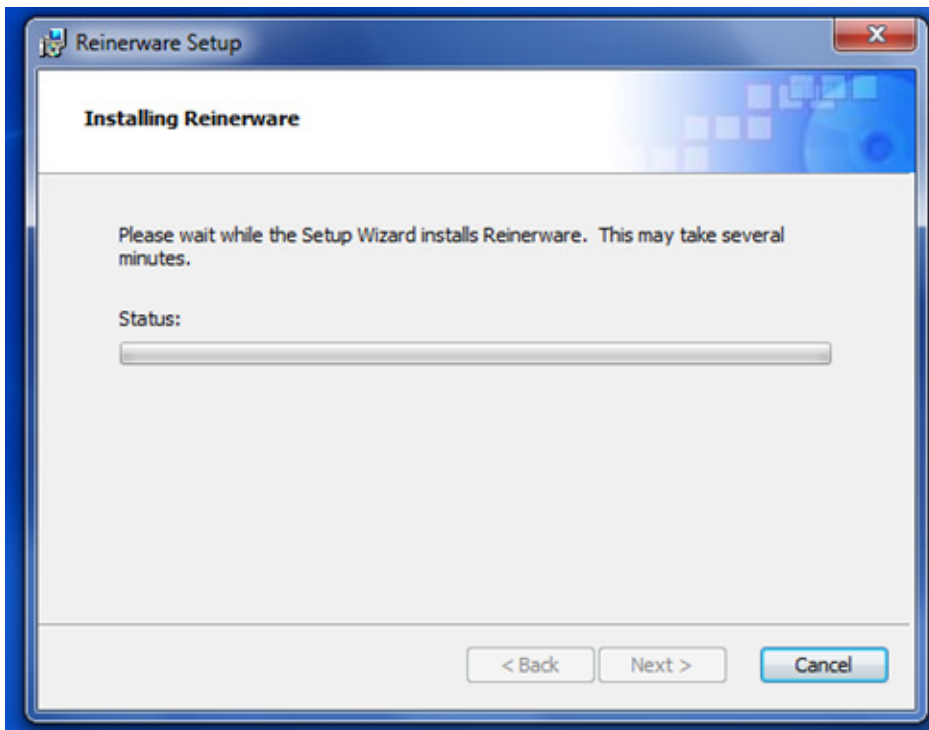
Double click on the typical icon, click next



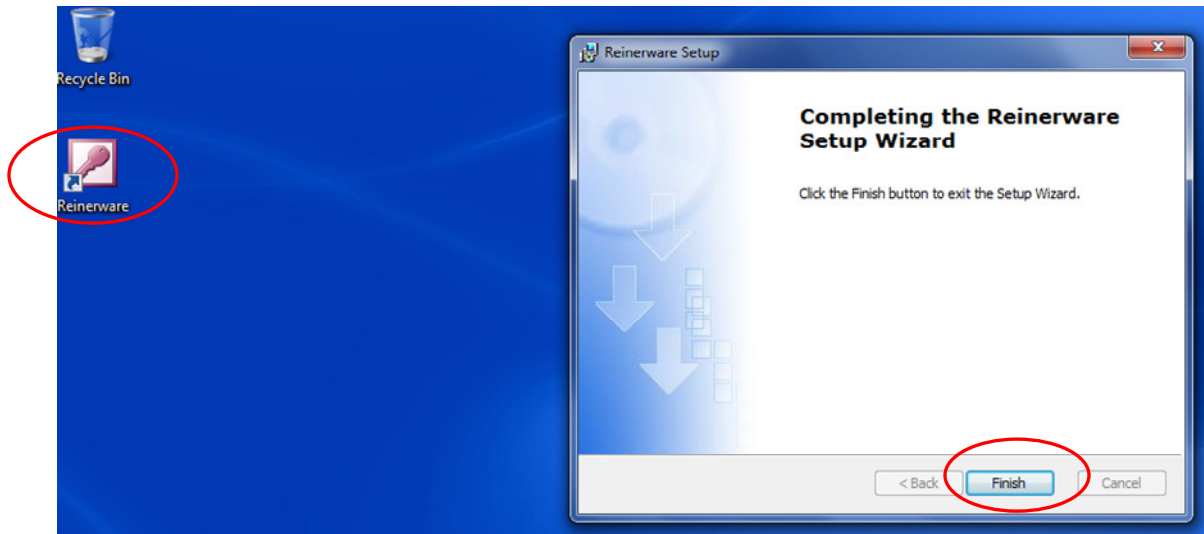
Click on the install icon



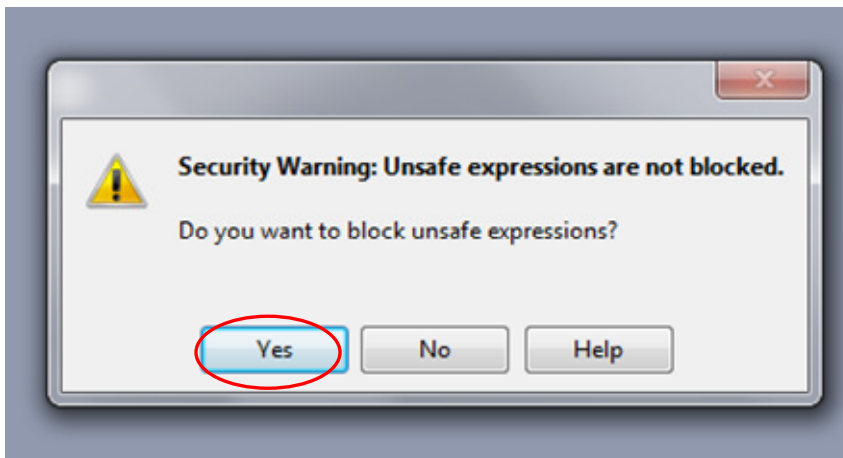
Wait while the software installs



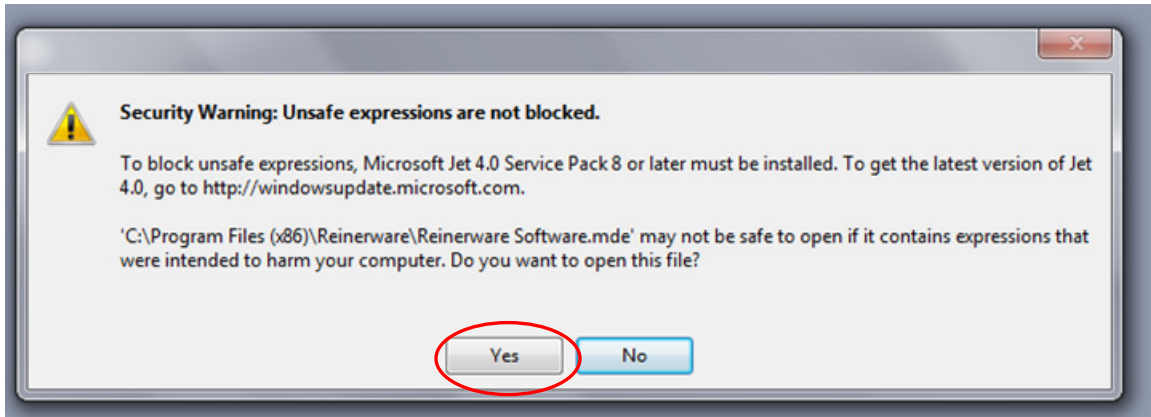
Click finish and you will now notice the Reinerware shortcut on your desktop. Double click on the shortcut to open Reinerware.



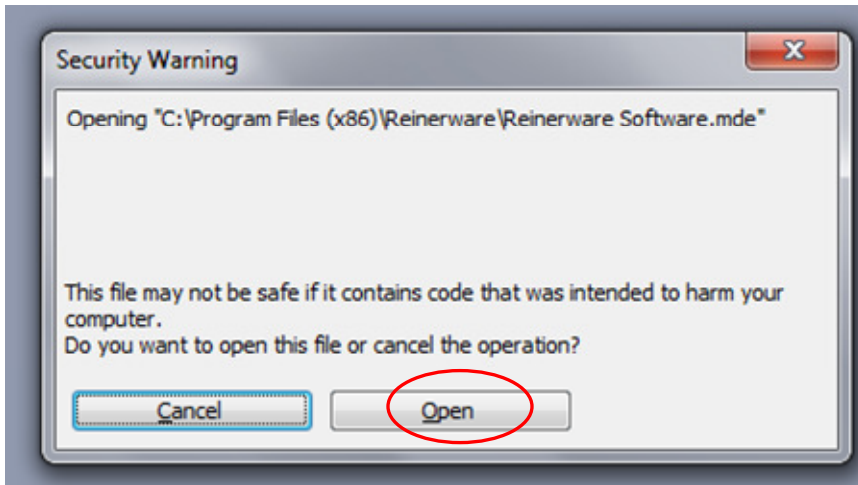
Answer “Yes”



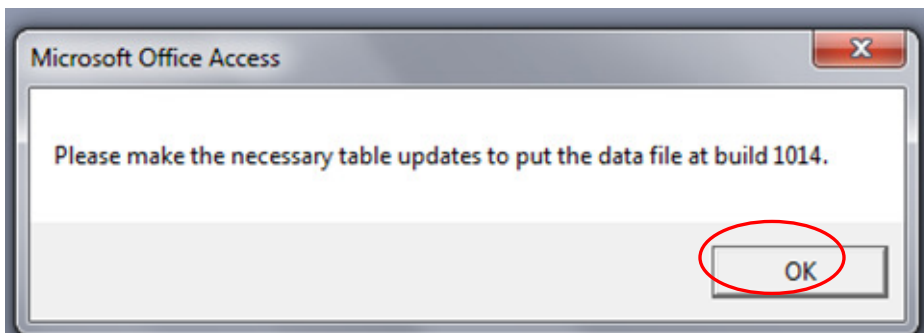
Answer “Yes” again



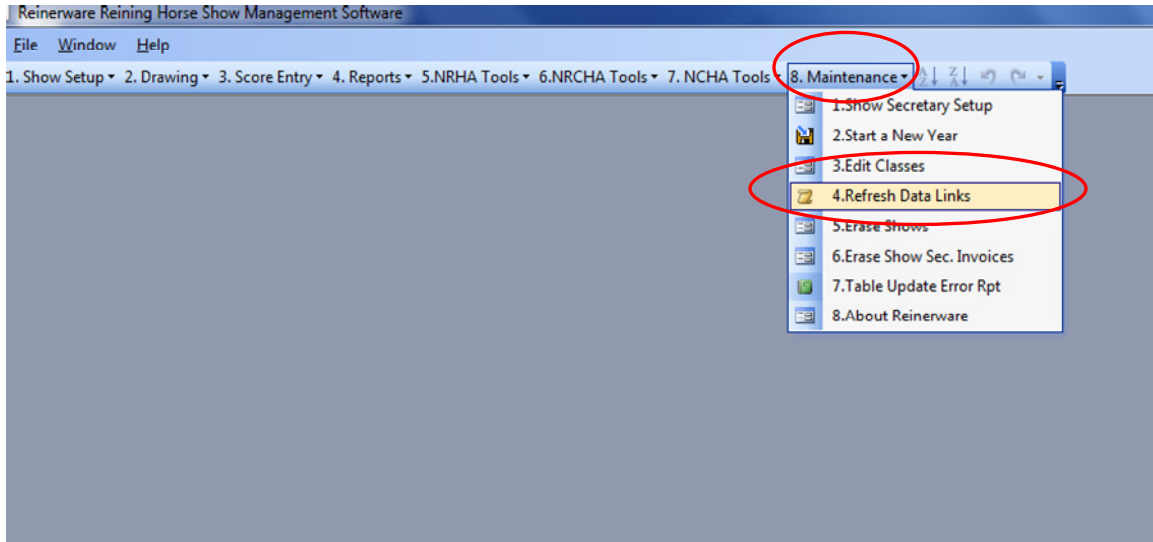
Click on Open to start Reinerware



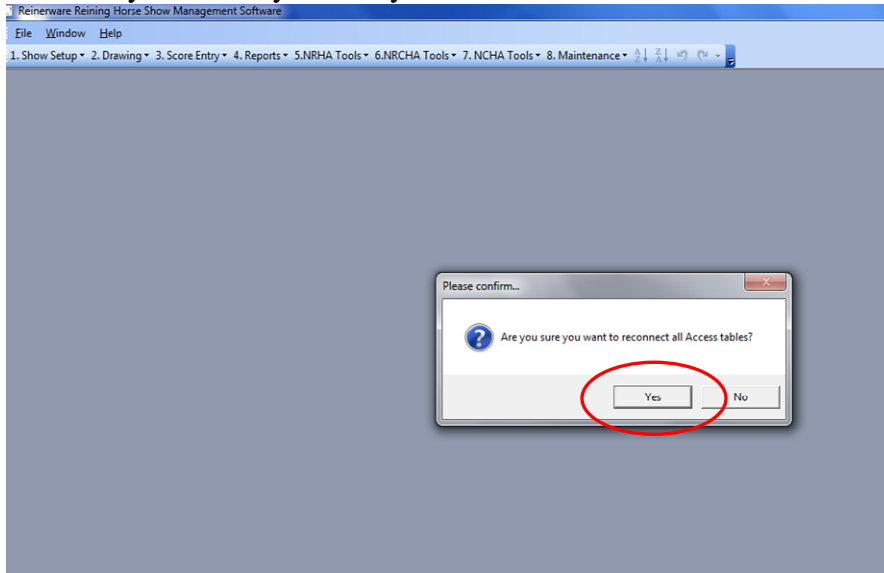
You will receive this message, click OK



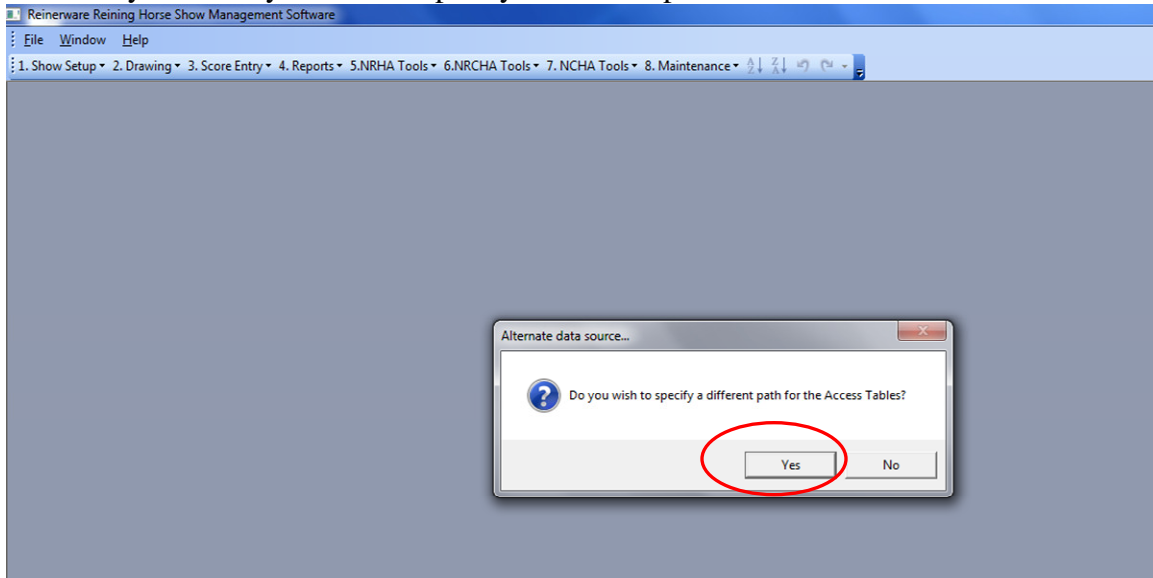
In Reinerware, navigate to 8. Maintenance/4.Refresh data links



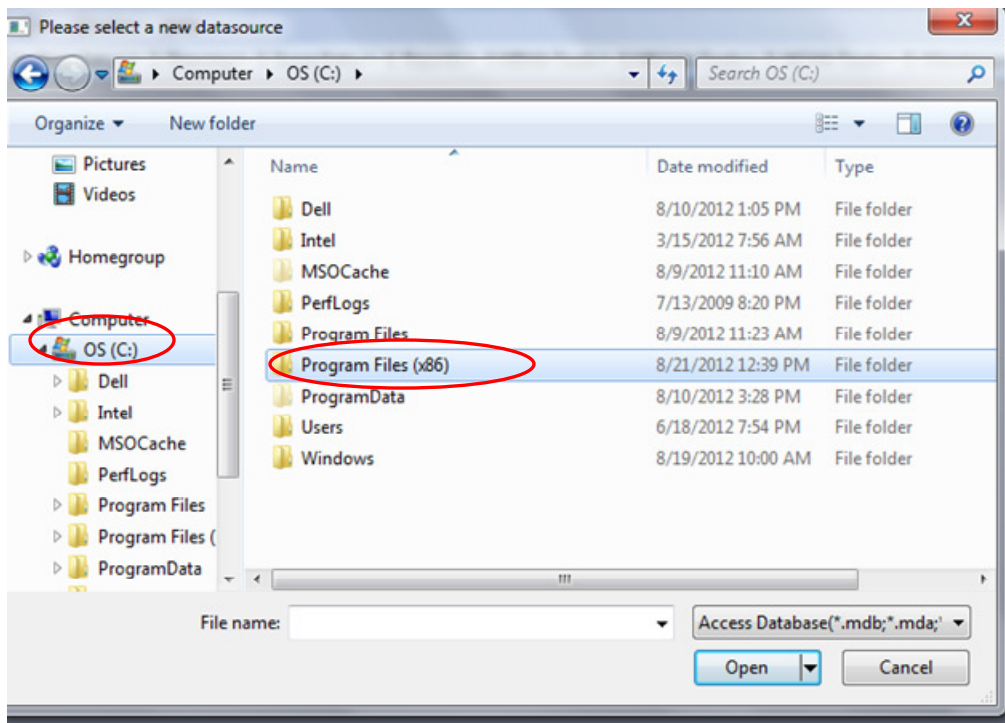
Answer “yes” to are you sure you want to reconnect all Access tables



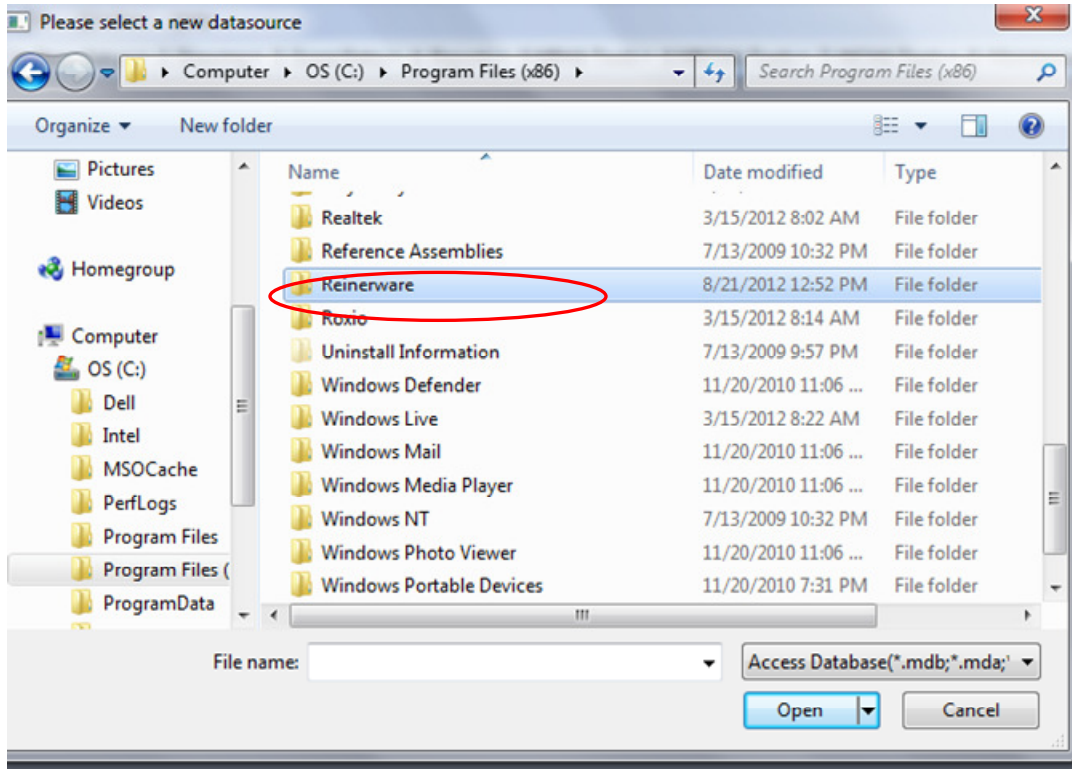
Answer “yes” to do you wish to specify a different path for the access tables



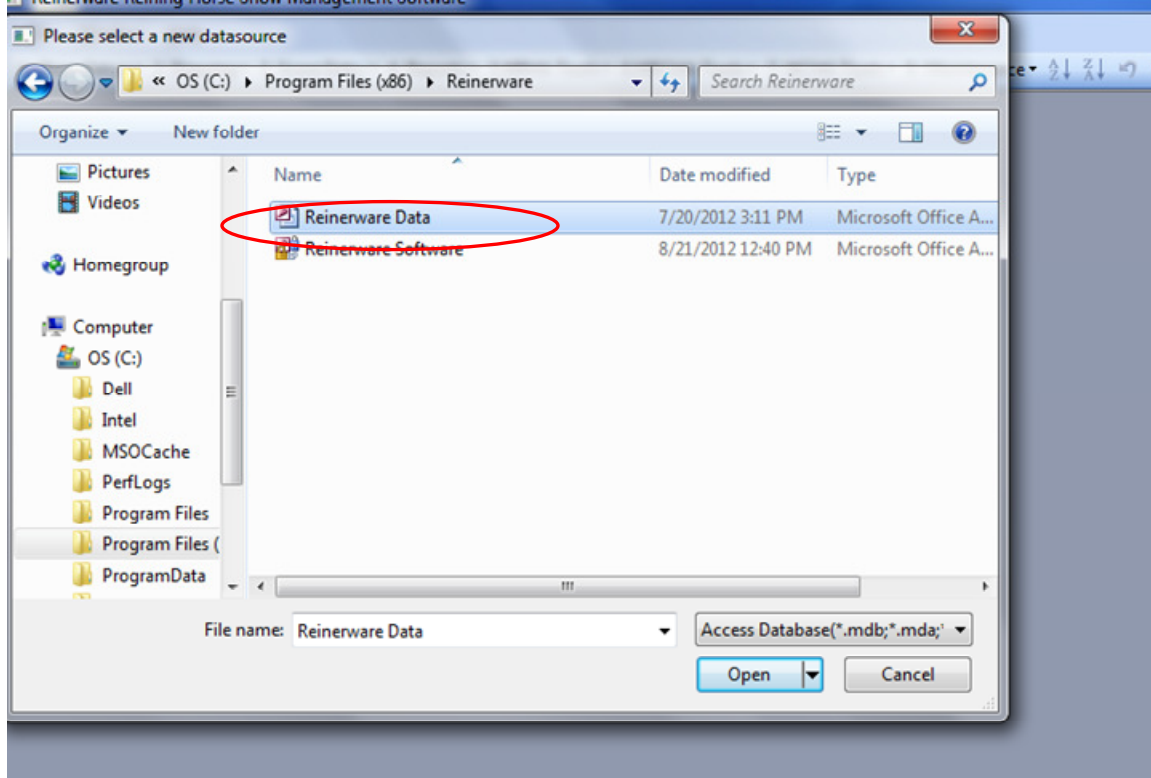
Now navigate to C, and then Program Files (x86)



Then double click on Reinerware



Then double right click on Reinerware Data.



You will receive a message that “All tables were successfully connected”, click “OK” and the software trial will open up for you.

You are now able to enter a limited amount of data into the trial. Please refer to the trial instructions for help getting started as well as purchase information should you decide you like the software.

Thank you for your interest in Reinerware Reining Horse Show Management Software!